

OPERATING INSTRUCTIONS

Model EMNA-120

Single Pole (One Location) 400 W Incandescent, 3.5A load, 100 W CFL/LED, 120VAC, 60 Hz

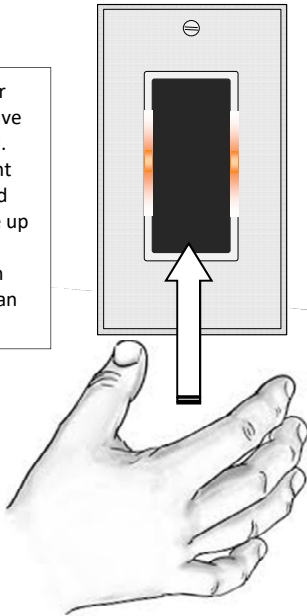
OPERATION REQUIREMENTS:

- Allow a minimum of 15" (38cm) clearance between switch front surfaces to any stationary solid object.
- Your hand should be placed between 2 to 10" (5-25cm) from the switch face when gesture waving.
- The switch will not respond to gesture waves that are too fast or too slow.
- The switch will not respond to horizontal or random gesture waves.
- Refer to installation instructions to set up dimming and wall wash options.

Step 1 Gesture WAVE of hand UP to turn switch ON

- The switch will show an (amber) color when it detects your hand presence.
- To turn the light ON, swipe your hand in a vertical motion from bottom to top when **no** amber color is ON.
- The switch will change from amber to green indicating it is ON.
- NOTE: With **no** amber ON, hand must start below switch plate when you wave up to turn switch ON.

TIP: A too fast or slow gesture wave may be rejected. Practice different speeds and hand positions. Swipe up to turn ON only when the switch doesn't display an amber color.

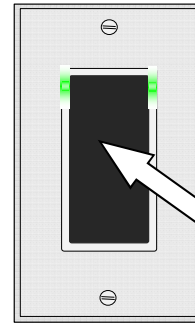


TIP: In order to turn the lights ON or OFF by gesture waving its best to wait for all green or amber switch lights to be OFF.

Step 3 Gesture IN or OUT movement of hand to DIM

See www.ubiquilux.com for a demo video.

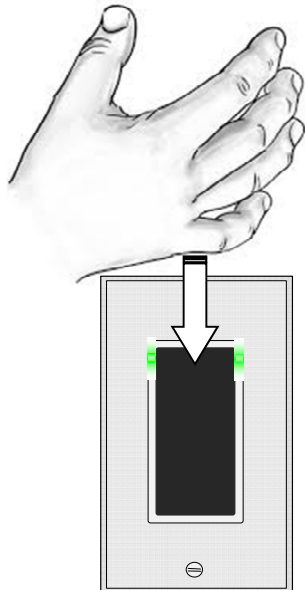
- When the **switch is turned ON** (green), wave up from the bottom to top again.
- The switch will then respond with a **quick illumination of all green LEDs**.
- Now quickly move your hand and hold it 2" to 3" (5-8cm) in front of switch for **at least two seconds**.
- Now slowly move your hand straight away from the switch to adjust the light level.
- When the desired light level is obtained, move your hand away to the side.
- Moving your hand closer to the switch dims the light and away brightens the light.



TIP: When the **switch is turned OFF** (amber) and you **first** gesture up to turn the light ON, immediately hold your hand for two seconds in front of the switch and then DIM or BRIGHTEN by slowly moving your hand closer or away from switch.

Step 2 Gesture WAVE of hand DOWN to turn switch OFF

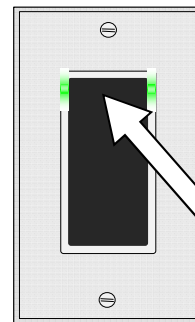
- The switch will show a (green) color when it detects your hand presence.
- To turn the light OFF, swipe your hand in a vertical motion from top to bottom.
- The switch will change from green to amber indicating it is OFF.
- NOTE: Hand must start above switch plate when you wave down to turn OFF.



TIP: For reliable ON and OFF switching, always gesture wave past the switch plate. Optimized sensing is 2" to 10" away.

Step 4 TOUCH the switch surface to turn ON or OFF and DIM

- Momentarily pressing the switch ANYWHERE will turn it ON or OFF.
- Press and hold on the TOP of the switch will RAISE the light level.
- Press and hold on the BOTTOM of the will DIM the light level.



TIP: The switch will work as a standard ON/OFF switch by momentarily pressing the surface.

TROUBLE SHOOTING

Switch will not respond to hand swipe gestures or DIM

- Try different swipe speeds and distances. Keep your hand flat.
- To enable DIM confirm that DIM option switch is in correct position.



For instructional demo video scan QR code above or visit www.ubiquilux.com

Covered by one or more US and Foreign Patents and patents pending.
Copyright 2015 Ubiquilux Inc. All rights reserved.